

INFORMATION SHEET

BigOceanData Vessel Tracking

Global vessel visibility for fleet control,
port-call readiness and maritime risk awareness.



24M+

position reports
every day

450k+

vessels
tracked

4,500+

ports
monitored

96%

client renewal
rate

Visibility that becomes action

BigOceanData delivers a shared operational picture across owned fleets, third-party vessels, ports and areas of interest. Terrestrial and satellite AIS are combined with additional tracking inputs when available, giving teams high-confidence visibility in the places where operational, commercial or risk exposure is highest.

The platform supports day-to-day fleet monitoring, port-call readiness, exception management, security-sensitive operations and incident review, without forcing teams to move between disconnected tools.



Control fleet exceptions

Prioritise movements that need attention, from deviations and delays to unexpected area activity.



Protect port-call execution

Build earlier confidence around arrivals, anchorage activity and in-port status for berth and service planning.



Verify events faster

Move from alert to track history, port context and replay without rebuilding the picture manually.



Support security response

Bring SSAS alerts into the same operating view as position, history and nearby vessel activity.



Reduce manual checking

Use watchlists, tags and event-based alerts to keep teams focused on vessels under responsibility.



Maintain confidence

Strengthen monitoring in open-ocean or degraded AIS areas using multi-source tracking and gap-aware history.

Key capabilities

- | | |
|--|--|
| <ul style="list-style-type: none">● Multi-source AIS coverage
Terrestrial and satellite AIS for global vessel visibility across ocean, coastal and congested waters | <ul style="list-style-type: none">● Advanced search and filtering
Find vessels by type, flag, ownership, behaviour, speed, port call or custom criteria. |
| <ul style="list-style-type: none">● Fleet lists and watchlists
Organise own fleet and third-party vessels by tag, segment, voyage, customer, risk exposure or operational interest. | <ul style="list-style-type: none">● Alerts and area monitoring
Define zones, thresholds and events that notify teams when activity requires attention. |
| <ul style="list-style-type: none">● Port activity and replay
Review arrivals, departures, anchorage activity and historical movements in one operational picture. | <ul style="list-style-type: none">● Behavioural analytics
Identify loitering, unusual speed patterns, route changes and suspicious activity for earlier assessment. |

BOD Vessel Tracking

Designed for operational decision points, not passive map viewing. BigOceanData helps operational teams maintain a managed picture of vessels, voyages, ports and areas of concern - then move quickly from signal to assessment, action and evidence.

From signal to operational action

1

Watch

Track fleets, counterparties, port calls and areas of interest from one operational view.

2

Trigger

Use geofences, alerts and behavioural signals to expose movements requiring attention.

3

Assess

Check vessel details, track history, port activity and surrounding context.

4

Act

Coordinate customer updates, agency action, security response or operational follow-up.

5

Evidence

Use replay and movement records to document events and improve future decisions.

Where vessel tracking delivers value



Fleet operations

Maintain a current view of owned and nominated vessels, with alerts focused on exceptions rather than every movement.



Risk, security and insurance

Investigate deviations, suspicious behaviour, SSAS events and historical movements with evidence and context.



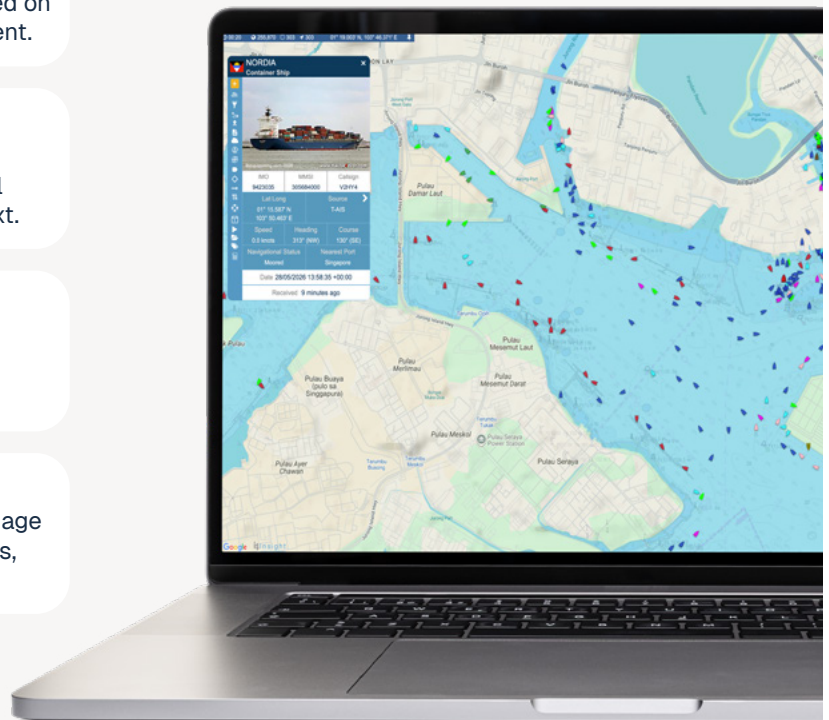
Port-call and agency teams

Monitor arrivals, anchorage activity, in-port status and departures to support berth and service readiness.



Chartering and commercial

Track counterparties, nominated tonnage and market activity to support fixtures, updates and voyage control.



Why BigOceanData

BigOceanData is a maritime operations platform built on deep vessel tracking heritage and high-quality global coverage. Vessel Tracking combines terrestrial and satellite AIS with SSAS awareness, behavioural analytics and gap-aware history in one cloud-based environment.

For fleet managers, that means more than positions on a chart. It means confidence in the operational picture, fewer disconnected checks and faster investigation when an exception occurs: whether that is a voyage deviation, a port-call update or a security event.

Built to support maritime operations

Use Vessel Tracking as a standalone operational layer or alongside BigOceanData Route Optimisation and Maritime Intelligence when the situation requires wider voyage, risk or performance context.

Contact

Request a live walkthrough to see how BOD Vessel Tracking supports fleet control, port awareness and operational investigation.

Phone

+44 (0) 207 998 3048

Email

sales@bigoceandata.com

Web

bigoceandata.com

